



OCG-GN-

P2110

Installation Guide

LED & port overview



● Power
● Glas
● Ethernet

Power

Green – system ok
Off – power off

Glas

Green – WAN link ok
Green (blinking) – WAN port connected, traffic ongoing
Off – no WAN link

Ethernet

Green – link up with 1G speed
Yellow – link up with 10/100M speed
Green/Yellow (blinking) – LAN port connected, traffic ongoing
Off – LAN port not connected



LAN port Power port

Installation guide

Getting started

Check if the following items are in the giftbox

- OCG-GN-P2110
- Power adapter
- Unit label

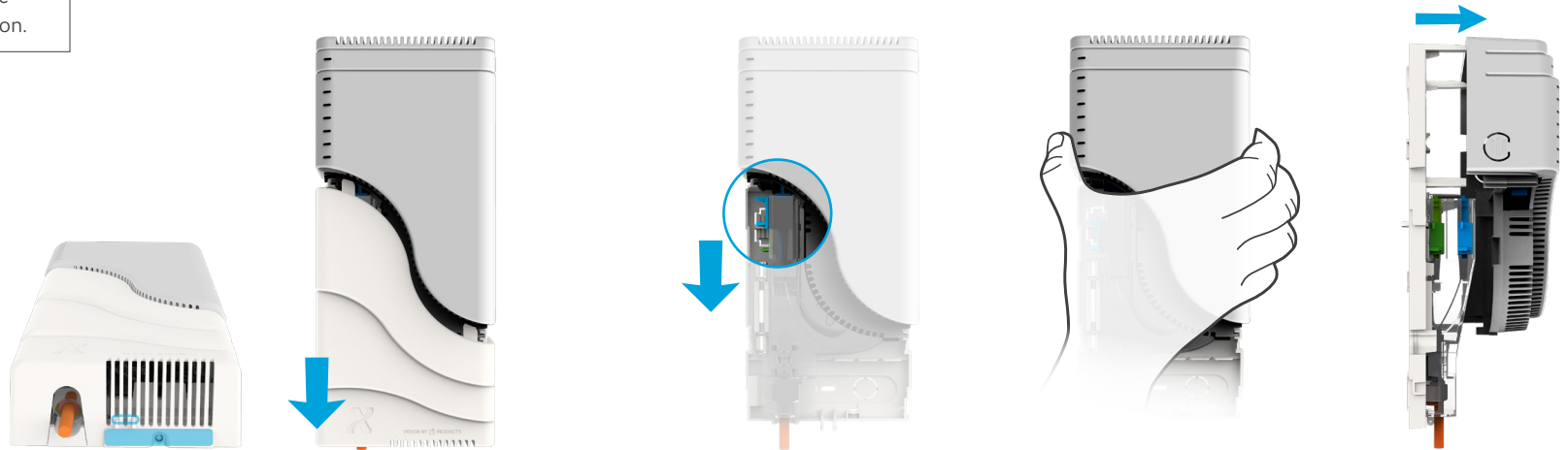
Preperation:

- Make sure that the FTU is placed within 150cm of a power socket.

Important: It is crucial these next steps are completed in one go. Failure do to so will result in damage to the fiber optic connector and cause signal degradation.

Setting up the OCG

1. If present, remove the seal sticker that covers the screw and remove the seal tag.
2. If present, remove the screw on the bottom of the white cover.
3. Slide the white cover down until it unlocks.
4. Remove the white cover from the base plate (FTU) by pulling it towards yourself.
5. Slide the blue connector down to disconnect it from the old product. (In case it is a new installation skip this step, than the blue coupler is already down.)
6. Grab the product with two fingers placed on both unlock buttons on the side.
7. Remove the old product from the base plate (FTU) by pulling it towards yourself.



Remove dustcap (optional)

If there is a new activation the fiber connector is protected by a dustcap

1. Slide the blue connector up, revealing the dustcap.
2. Remove the dustcap from the blue connector while holding the blue connector in place.

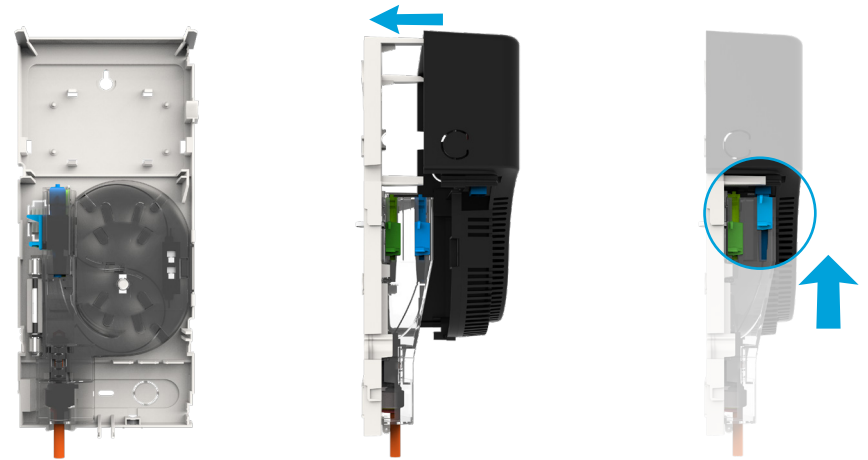
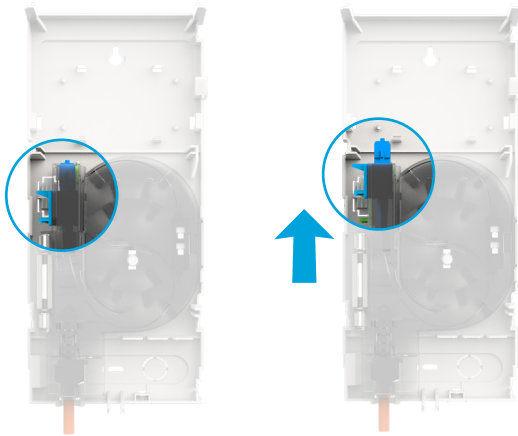
Remark: Never touch the tip of the connector.

3. Move the blue connector down, back in the original position.

Remark: Don't push the connector back in position with a finger on the tip.

Installation of OCG-GN-P2110

1. Remove the dustcap of the blue coupler on the OCG.
2. Place the OCG on the base plate by pushing the product away from you. You will hear a click when the OCG is placed in correct position.
3. Slide the blue connector up, to click in the OCG-GN-P2110.



4. Place the white cover by pushing it away from you.
5. Slide the white cover up. You will hear a click when the cover is placed in the correct position.
6. When included position the screw at the bottom to lock the two plastic parts.

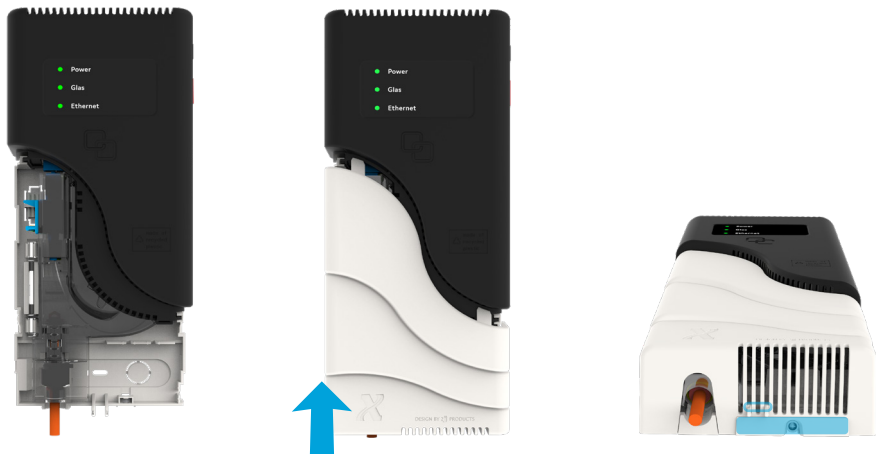
Optional

- Place the screw at the bottom to lock the two plastic parts.
- Seal the plastic with a seal sticker (marked blue area, max. 50x9mm, sticker not included).
- Place a seal tag (marked area, not included in the box. It can be placed through the holes in the two tabs that are sticking out of the housing).

Finish

1. Connect the OCG LAN port to the residential gateway.
2. Connect the supplied power adapter to the OCG and plug it into the power outlet. The device will power on immediately.

The OCG-GN-P2110 is now correctly installed.



Safety and Care

Operating Conditions

- Do not operate the device in temperatures below 0° C or above 40° C.

Safe Operation

- Never look directly into the end of a fiber optical cable.

Warning: The OCG is a Class 1 laser product.

- Use only the supplied power adapter and make sure the adapter is rated for use with the power supply.
- Indoor use only.
- Never expose to or immerse in water.
- Do not block the air vents (the device will overheat).

Repair and Service

- Do not open the housing. There are no user serviceable parts inside.
- Please contact your service provider if the device stops operating as expected.

Care

- Always unplug your OCG from the power supply before cleaning!
- If needed, the OCG can be cleaned by wiping it over using a soft, dry cloth. Avoid any abrasive material that might scratch or damage the surface.
- To remove accumulated dirt, a damp cloth may be used.
- Make sure no moisture or liquid enters the OCG. This will cause permanent damage and will prevent the device from operating.
- Product logos and LED icons will be damaged by the use of strong cleaning products or ethanol based solutions.

Revision 1.0 - January 2020 Copyright © 2020 Genexis B.V. All rights reserved.

Genexis assumes no responsibility for any inaccuracies in this document. Genexis reserves the right to change, modify, transfer, or otherwise revise this publication without notice.